

Instituto Superior de Engenharia do Porto



Didactic Robot Fish Kit

Interim Report

Authors:

Achim Reinhardt
Alvaro Chousa Esteban
Justyna Urbanska
Martin McPhee
Terry Greene

April 2016



Instituto Superior de
Engenharia do Porto



IT sector

Index

Acknowledgement	5
1. Introduction.....	6
1.1 Presentation	6
1.2 Motivation	6
1.3 Problem	7
1.4 Objectives	7
1.5 Requirements	8
1.6 Functional Tests	8
1.6.1 Dry Land Tests	8
1.6.2 In Water Tests	8
1.7 Project Planning	9
1.8 Report Structure.....	10
2. State of the Art	11
2.1 Introduction.....	11
2.2 Educational programming languages for children	11
2.2.1 Introduction.....	11
2.2.2 Text-based programing	11
2.2.3 Block-based programing.....	12
2.2.4 Programing by demonstration	13
2.2.5 Summary	13
2.2.6 Conclusion	13
2.3 3D Printing Plastics	14
2.4 Waterproofing.....	15
2.4.1 External Access Sealing	16
2.5 Robotic Fish Movement	17
2.5.1 Real Fish Movement.....	17
2.5.2 Other Robotic Fishes	17
2.6 Controller boards	18
2.7 Robots	19
2.7.1 Educational Robots.....	19
2.8 Conclusion	20
3. Project Management.....	21

3.1 Scope	21
3.2 Time.....	21
3.3 Cost.....	24
3.4 Quality	25
3.5 People.....	25
3.6 Communications	26
3.7 Risk	27
3.8 Procurement	28
3.10 Conclusion	29
4. Marketing Plan	30
4.1 Introduction.....	30
4.2 Market Analysis	31
4.2.1 Macro Environment	31
4.2.2 Micro Environment	34
4.3 SWOT Analysis.....	35
4.4 Strategic Objectives.....	35
4.5 Segmentation	35
4.5.1 Demographical segmentation	36
4.5.2 Geographic segmentation	36
4.5.3 Behavioural segmentation	36
4.5.4 Psychographic segmentation	37
4.6 Strategy/Positioning.....	37
4.7 Adapted Marketing-Mix	37
4.7.1 Product	37
4.7.2 Price.....	37
4.7.3 Promotion	37
4.7.4 Place	38
4.8 Budget	38
4.9 Strategy Control	39
4.10 Conclusion	39
5 Eco-efficiency Measures for Sustainability	39
5.1 Introduction.....	40
5.2 Environmental	40
5.3 Economical	41

5.4 Social	41
5.5 Life Cycle Analysis.....	42
5.5.5 End of life phase	43
5.6 Conclusion	43
6 Ethical and Deontological Concerns.....	44
6.1 Introduction.....	44
6.2 Engineering Ethics	44
6.3 Sales and Marketing Ethics	45
6.4 Academic Ethics.....	46
6.5 Environmental Ethics.....	46
6.6 Liability	47
6.7 Conclusion	47
7 Project Development	48
7.1 Introduction.....	48
7.2 Architecture.....	48
7.2.1 Electronic Architecture.....	48
7.2.2 Modeling the Fish Body.....	49
7.3 Components	53
7.4 Functionalities	53
7.5 Tests and Results.....	53
7.6 Conclusion	53
8 Conclusions.....	54
8.1 Discussion	54
8.2 Future Development	54
Bibliography	55

Figures

Figure1: WBS	21
Figure2: Gantt Chart.....	22
Figure3: Micro and Macro Environment.....	30
Figure4: PESTEL	31
Figure6: SWOT ANALYSIS	35
Figure8: The electronic schematics includes all components which are located inside the fish...49	
Figure9: Structural Drawings.....	50
Figure10: Structural Drawings.....	50
Figure11: 1st Complete 3D CAD Model	51
Figure12: 2nd Complete 3D CAD Model	52

Tables

Table 1: Tasks	9
Table 2: Comparison of the presented programming language.....	13
Table 3: Comparison of Potential 3D Printed Plastics 3DPrintingforbeginners.....	14
Table4: Sealing Porous Plastic.....	15
Table5: Gland Design DimensioningSeal & Design Inc.. Gland Dimensions Face Seal Glands. ..	16
Table6: Examples of different robotic fish.....	17
Table7: Examples of controller boards	18
Table8: Examples of educational robots.....	19
Table9: Work Plan	23
Table10: Material list	24
Table 11: Work cost	24
Table11: RACI.....	25
Table12: Risk register.....	27
Table13: Stakeholders management	28
Table14: Percentage amount of the population in the USA and Germany in 2020	Error!
Bookmark not defined.	
Table15: Preliminary material list	53

GLOSARY

EU	European Union
PLA	Polylactic Acid
ABS	Acrylonitrile butadiene styrene
PVA	Polyvinyl alcohol
SWOT	Strengths Weaknesses Opportunities & Threats
WBS	Work Breakdown Structure
STL	StereoLithography

Acknowledgement

Team three would like to extend their appreciation towards ISEP and the EPS program. For they brought this wonderful team together and gave them the opportunity and resources to complete a truly special project.

This team is also compelled to express gratitude for the members of ISEP's EPS advisory board, namely Abel Duarte, Fernando Ferreira, Benedita Malheiro, Cristina Ribeiro, Manuel Silva, Paulo Ferreira, Pedro Guedes. This group of individuals provided an invaluable resource, providing patient advice and direction throughout the course of the project.

Finally, team members would be remiss in not extending sincerest deepest gratitude to IT Sector, the company sponsorship behind this project.

1. Introduction

1.1 Presentation

We are a multidisciplinary, international group of students brought together to work on a common project.

- Achim Reinhardt - Media Technology
- Alvaro Chousa Esteban - Engineering and Architecture
- Justyna Urbanska - Logistics Management
- Martin McPhee - Electrical, Electronic and Energy Engineering
- Terry Greene - Mechanical Engineering

The team members are from Germany, Spain, Poland, Scotland and the U.S.A respectively. We arrived to Porto, Portugal to take part in a European Project Semester at the Instituto Superior de Engenharia do Porto. With such a diverse background, each team member comes with their own unique set of skills and knowledge. We are a creative, ambitious and hardworking group of young people who aim to continue improving, developing and expanding on our horizons.

1.2 Motivation

All members of Team Three choose to participate in EPS, believing it an amazing opportunity to develop their skills and gain exposure to students of varied backgrounds and fields of study. Team members relish the opportunity to learn about other cultures and increase both their technical and soft skills background.

When faced with the choice of a project for the semester, Team Three was presented with a wide range of options. Together, they were able to unanimously selected the Didactic Robotic Fish as the project to proceed with. Team members believed that their skill sets suited the project well, and that there is a place in the market for an inexpensive, educational toy to teach young children programming.

1.3 Problem

The 21st century is a digital world. In this world, the technologically literate flourish, while those stuck in the ways of the past may be left there. If technological education is left solely to a wildly varying set of international education standards, many children will miss out on the exposure to programming and electronics during their formative years. However, if young children are introduced to these concepts, in the right way, it can foster a desire for continued learning and a much deeper understanding later in life.

A few educational toys, meant to introduce kids to programming and/or electronics are currently on the market. However, these toys are offered at a relatively high price, effectively plucking them from the hands of many children in low income families. However, these are the children with the greatest need to access such toys. The pursuit of technical knowledge, which can be ignited with educational toys, is exactly tool a person needs to move up the socioeconomic ladder.

As technology grows, it has also been becoming more successfully. Zettabytes of information is available online, 3D printing has brought fast custom manufacturing to a wide range of users, and new opensource technology and software is being created and shared every day. The convergence of these factors allows any motivated individual, to complete tasks that a decade ago would have only been feasible for the well-educated and well financed. Team Three is using these resources and technologies to create the opensource didactic programming toy, Coduino. Coduino will be inexpensive enough to be wildly more accessible than similar products, and since it is open source, the design and programming will forever be open to improvement.

1.4 Objectives

Team Three's primary aim is to create an innovative, fun, and engaging product that will teach young children the basics of programming. The end product needs to be attractive to children and parents, and simple enough for someone with no prior programming knowledge to use. In order to engage children's curiosity and enthusiasm, the products learning curve should allow steady progress, remaining fun with a low to medium degree of difficulty. Since Coduino is a child's toy, its construction should be robust enough to survive mild abuse.

To supplement the toy itself, the product will come with a comprehensive digital user manual as well as website children and parents can turn to for fun activities and to answer any further questions.

1.5 Requirements

The prototype of Coduino will be required to meet the following standards:

- Waterproof construction
- At least one degree of freedom
- Use low cost hardware solutions
- Use open source software
- A minimal number of standard batteries (four 1.5 V AA batteries or one 9 V battery)
- Create the project website to provide all information needed to replicate the robot (drawings, components, source code, etc.) in PT and EN as well as instruction scripts with some basic experiments
- Reuse the provided materials
- Keep construction and development cost under 50€

The above are the project requirements as stated by the project proposal. However, it is also important to consider requirements which arise when examining the end users' needs. Since Coduino is a child's toy, its construction and operation should be very simple, and the design must be robust enough to survive minor falls and the like. Additionally, the design should be attractive to children, and it is essential that the product has a didactic element. Coduino as a teaching tool is how parents will be attracted to the product and how this toy can really make a difference in the world.

1.6 Functional Tests

A multitude of tests will be required to determine if Coduino is prepared to be released to a commercial environment. A series of tests both on dry land and in the water are outlined below.

1.6.1 Dry Land Tests

- Test if tail linkage is operational
- Test if the lateral fins will rotate to commanded angles
- Test LED control
- Test custom block programming language to ensure desired results

1.6.2 In Water Tests

- Test if lateral fin servos are waterproof
- Fully submerge Coduino to test if body is waterproof (the only electronics inside for the first test should be the lateral fin servos, LED, and the on/off switch)
- Test Coduino's buoyancy with all functional elements installed
- Test forward motion
- Test Coduino's ability to turn

1.7 Project Planning

During the first week Team Three completed a Gantt chart which was kept updated throughout the semester. This simple tool helped members stay on schedule, and helped the team divide up the tasks to the most qualified team members. Once the series of semester tasks were laid out, it was simple for each team member to identify where their skills and interests were well suited for tasks. After discussing individual strengths and weaknesses, the team was able to settle on the division of labor outlined in table 1, on the next page.

Table 1: Tasks

TASKS	RESPONSIBLE
Planning	
Find the tasks	All
Create the Gantt	All
System Diagrams & Structural Drafts	Alvaro
System Schematics & Structural Drawings	Alvaro
Research	
Physical Characteristics Fish	Martin, Alvaro
Programming Research	Achim
Targets	All
Design	Terry, Alvaro
Engineering Development	Terry, Martin
State of the Art	All
Marketing Study	
Compare suppliers	Justyna
Compare budget and the project	Justyna
Modifications	All
Materials	
What	Achim, Terry
Quantity	Achim, Terry
Prototyping	
Materials	All
Design	Terry, Alvaro
Construction	All
Functional Tests	All
Improvement/modification	All
Report/Presentation	
Upload Final Report, Presentation, Video, Paper, Poster, Manual and Website	All
Final Presentation, Individual Discussion and Assessment	All
Wiki	
Update the wiki with all correction suggestions	All
Hand in a CD with the corrected deliverables together with all code produced to the EPS coordinator	All
Hand in one printed exemplar of the corrected report to the EPS coordinator	All
Final Submission	
Hand in the prototype and user manual	All
Certificate	All

All the members of team three agreed that dividing the tasks as outlined in table 1 represented the best allocation of labor and a fair work load for all. Obviously as you progress through a new project, unexpected work is bound to crop up. Such tasks are dealt with based on team member expertise and current availability.

1.8 Report Structure

The report is divided into eight major sections, each section in turn containing several minor sub-section. This division is outlined as follows:

1. Introduction: In this section, team three introduces its members and project. Why the specific project was under taken, what the final product will look like, and how this goal will be achieved is discussed.
2. State of the Art: In the state of the art, modern technologies and research relating to Team Three's project is identified and discussed.
3. Project Management: This section examines how Team Three planned and managed their project throughout the semester, it includes several charts and tables outlining the time line and task allocation.
4. Marketing Plan: The marketing plan discusses who the target market for Coduino is and how to effectively market to them.
5. Eco-efficiency Measures for Sustainability: This section discusses how economic, environmental and social responsibility concerns apply to the Coduino, and outlines a life-cycle analysis for the product.
6. Ethical and Deontological Concerns: This section outlines what ethical concerns were taken into consideration during the development, and how they effected the project.
7. Project Development: The project development section covers the ongoing design and development of Coduino.
8. Conclusion: The conclusion wraps up the report with a discussion of the projects accomplishments and potential future.

2. State of the Art

2.1 Introduction

The team has aimed to show what a didactic robotic fish is and to clearly show the market that will be targeted. Research was carried out on several existing products in the market, with several comparisons of products to identify the most suitable way to construct the project. It was recognised that the product, due to the target market of young children that the programming of the robot must be simple where movements would be restricted to left and right avoiding more complicated moves like for instance, moving up or enabling the robot to dive. This section will explore the products and materials that were investigated and reveal how the team came to the final conclusion of the chosen design for the didactic robotic fish.

2.2 Educational programming languages for children

2.2.1 Introduction

Nowadays, programming is apparent in every daily life and it is important to understand the process. Therefore, educational programming languages were developed to aid in this understanding. Educational programming languages are designed for children and beginners interested in learning about programming. The focus of these languages is on the simplification of the programming process to help new programmers become familiar with the main functions and principles. These educational programming languages are important for educational purposes and are used throughout educational institutions. Not only is programming taught in education circles, but it is also becoming popular in private sectors. In general, the different educational programming languages can be categorized as text-based languages, block-based languages and languages that use the concept of programming by demonstration.

2.2.2 Text-based programming

2.2.2.1 Karel

Karel is a text-based programming language for beginners. This language is used to control a robot named Karel. The robot is situated in a grid based environment. To control the it, there are five basic commands: move (moves to the next square), turnLeft (turns left), putBeeper (puts beeper on the square he stands), pickBeeper (takes beeper from the square he stands), and turnoff (ends the program). In Karel there are also control flow commands available, like if or while statements. Karels syntax has similarities to Pascal. Tom Mitchell, jul 2000. [*Karel The Robot.*](#)

2.2.2.2 RoboMind

Like Karel, RoboMind is addressed to programming beginners and children. It uses a text-based language to move a robot in a two-dimensional world. The Robot is able to write on the ground, to pick up, and drop off objects called beacons. The functionality of RoboMind expands on the functions of Karel through advanced if-else statements, functions containing parameters, and recursive calls. The syntax of RoboMind is essentially a simplified version of C/C++. Ernst Bovenkamp, apr 2016. [*RoboMind.*](#)

2.2.3 Block-based programming

2.2.3.1 Scratch

Scratch is a visual programming language based on block elements. The programming is realized by chaining different block elements together. With this approach, errors caused by syntax mistakes are avoided. The playful approach of this language engages children and teaches them basic programming concepts without being restricted by syntax standards. The colorful appearance is appropriate for children. Scratch includes the standard programming elements and even allows a kind of class structure. Scratch is available in an online version on the website and offline as a download. Mitchel Resnick, April 2016. [Scratch.](#)

2.2.3.2 Blockly

Blockly is another block based programming language and resembles Scratch. It is based on JavaScript and is open-source. Blockly provides a simple, basic set of operations and function, but its functionality may be expanded through the creation of custom blocks. Custom blocks can be created in an application called Block Factory or by writing new source code. Google Developer Groups, apr 2016. [Blockly.](#)

2.2.3.3 S4A

S4A (Scratch for Arduino) is a modified version of Scratch. It extends the functionality of Scratch by adding elements for the communication with various Arduino components such as microcontroller functionalities, analog and digital writes and reads, and also for high level controls. Edutec Research Group, apr 2016. [S4A.](#)

2.2.3.4 ArduBlock

ArduBlock is an extension for the Standard Arduino development environment. Its block based programming environment shares similarities with Scratch, Arduino, and Blockly. Additionally, ArduBlock is able to translate the block program into the Arduino programming language and transfers it directly to the Arduino development environment. As the user advances, this offers an easy transition into text-based programming. David Li, apr 2016. [ArduBlock.](#)

2.2.3.5 Kodu Game Lab

Kodu Game Lab is an programming development environment based on different block elements. These elements represent specific actions and functions. When a certain conditions arise a self defined procedure of function will be conducted. In the case, there is no condition defined the procedures will be performed in a loop. The appearance of Kodu Game Lab has a clear structure. That is because of the use of icons to represent the different functions. In general the whole workspace of the program reminds more of a game than of a programming environment. Microsoft, apr 2016. [Kodu.](#)

2.2.3.6 NXT-G

NXT-G is a graphical programming environment for the Lego NXT. Its programming is based on the manipulation of graphical blocks and wires. Via drag and drop, the user can combine different commands and requests. In this program, it is also possible to create sequences of parallel performed procedures. I addition to simple programs, NXT-G allows advanced connections to create a more complex program. Wikipedia, apr 2016. [Lego Mindstorm.](#)

2.2.4 Programing by demonstration

2.2.4.1 Stagecast Creator

The virtual programming language Stagecast Creator is based on the concept of programming by demonstration. From these demonstrations the programming language creates rules. These rules define how an object reacts in the game. To teach an object to move, the object is first moved by the mouse. Based on this movement, the resulting movement of the object is created. Allen Cypher, apr 2016. [Stagecast Creator](#).

2.2.5 Summary

As shown in Table 2, the presented educational programming languages were compared in matters of the programing principle, the open-source availability and the compatibility to Arduino.

Table 2: Comparison of the presented programming language

Language	Programing principle	Open source	Compatible to Arduino
Karel	Text-based	No	No
RoboMind	Text based	Yes	No
Scatch	Block-based	Yes	No
Blockly	Block-based	Yes	No
S4A	Block-based	Yes	Yes (provides Arduino code)
ArduBlock	Block-based	Yes	Yes (direct implemented in Arduino)
Kodu Game Lab	Block-based	No	No
NXT-G	Block-based	No	No
StageCast Creater	Programming by demonstration	No	No

2.2.6 Conclusion

Each of the presented education programming environment offers a good opportunity for taking first steps into programming. While text-based languages are more advanced because of the syntax restrictions and the complex handling, block-based languages offer a playful way to impart knowledge of programming to children. The programming by demonstration approach is also a great possibility for kids, but for the Didactic Fish Project it is not a viable solution. That is because of the independent nature of the robotic fish. Taking into consideration the the target group and the technical demands, block-based programming languages offer the best way to convey the thought process necessary, in programming to kids in a proper and playful way. With due regard to all the programming environments and considering their compatibility with Arduino, S4A and ArduBlock are clearly the best choices to create an appropriate educational programming environment for Coduino. Because of its integration into Arduino IDE, ArduBlock offers new programmers a smoother transition into advanced and text-based programming. For this reasons, the decision was made to use ArduBlock to create the educational programming language for the project.

2.3 3D Printing Plastics

3D printing is a very versatile technology which can be used to produce parts in a wide range of plastics. Some special printers can even print in concrete and certain metals. So when choosing a material to print in, there are several options to consider, each with their own benefits and drawbacks. To assist in that decision, three of the most widely available plastics for printing were compared in Table 3, on the next page. The table was provided by 3dprintingforbeginners.com.

Table 3: Comparison of Potential 3D Printed Plastics 3DPrintingforbeginners

	ABS	PLA	PVA
Scientific designation	Acrylonitrile butadiene styrene	Polylactic acid or polylactide	Polyvinyl alcohol
Produced from	Petroleum	Plant starch	Petroleum
Properties	Durable Strong Slightly flexible Heat resistant	Tough Strong	Water-soluble Excellent film formation High bonding power Good barrier properties
Extruder temp	210 - 250°C	160 - 220°C	190 - 210°C
Price	14-60\$ / kg	19-75\$ / kg	80-120\$ / kg
Post-processing	Easy sanding Easy glueing Easily soluble in acetone	Sanding possible Limited glueing	Soluble in water
Pros	Great plastic properties Smooth finish Solidifies quickly Durable and difficult to break Ideal for mechanical parts	Bioplastic – good environmental properties Good smell when heated Nontoxic No heated printbed necessary High print speed and resolution Less warping or shrinking issues Ideal for small parts Hard or soft/flexible variants	Biodegradable Recyclable Non toxic
Cons	Petroleum-based Non-biodegradable Heated printbed necessary Fumes Deterioration through sunlight	Slow cooling down Low heat resistance Easier to break then ABS Needs thicker walls then ABS	Expensive Deterioration due to air moisture Special storage necessary

As PVA is water soluble, it can be immediately discarded as a viable option for an aquatic robot. ABS and PLA are both potentially plastics which could be used for this project. ABS presents as the more durable and cheaper of the two plastics, where as PLA is advantageous due to its simple printing and the fact that it is a nontoxic and more environmentally friendly.

2.4 Waterproofing

In order to be successful the robotic fish should be able to be fully submerged in water without the risk of sinking or damaging any of the electronics. There are three key problem areas concerning the seaworthiness of the robotic fish. The first comes from allowing access to the internal working of the robotic fish. Both the developers and the end users of the fish will require use of any microcontroller's serial port as well as the ability to change or recharge the fish's battery. The second critical waterproofing area is any breaches in the fish's body that will allow for external LEDs, buttons, and fin movement. The final major waterproofing concern is due to the means of production; untreated, 3D printed plastic typically is not entirely waterproof. Even in a perfectly enclosed 3D printed structure, moisture will seep in. In table 4, on the next page, the different methods with the advantages and disadvantages of each of may be found.

Table4: Sealing Porous Plastic

Method	Advantages	Disadvantages
NeverWet or other hydrophobic sprayBecky Stern, jul 2013. <u>Experimenting with NeverWet + Electronics.</u>	Simple &Fast Application	Expensive Toxic materials
Heated Acetone VaporAndrew Sink, apr 2014. <u>Building an Acetone Vapor Bath for Smoothing 3D-Printed Parts.</u>	Ascetically pleasing No mess Fast Application	Fire hazard Requires heating apparatus (may be homemade) May change tolerances Toxic materials
Room Temperature Acetone Vapor	Ascetically pleasing No mess	Slow Requires treatment container (may be homemade) May change tolerances Toxic materials
Wax CoatingDebra Thimmesch, aug 2015. <u>USING WAX TO GIVE YOUR 3D PRINTS A SMOOTH, WATERPROOF FINISH.</u>	Non-toxic Cheap	Messy Application Leaves Residue
Epoxy CoatingBen Friesen, sep 2014. <u>Waterproofing PLA 3D Prints.</u>	Cheap	Messy application Toxic materials

As can be seen in the above table, each potential waterproofing method has its own advantages and draw backs. Additionally, some may only be used on specific kinds of plastic. This make it necessary to consider waterproofing and plastic selection together.

2.4.1 External Access Sealing

The simplest way to seal a breach in the body of the fish will be to caulk it with an epoxy. This may be done for openings designed to allow immovable fixtures, such as buttons and LEDs. However, this obviously is not a workable solution in regards to the servo to fin interface or allowing access to the fish's interior. To design in these features the simplest solution is likely the use of O rings and/or gaskets. O rings and gaskets are a time tested and well documented method of waterproofing. In order for these to be effective, several design considerations have to be taken into account. Thankfully plenty of information on proper gland design is readily available. One such source, for the type of face sealed, static O ring, likely to be used in the robotic fish, is shown in the Table 5, on the next page.

Table5: Gland Design Dimensioning Seal & Design Inc.. [Gland Dimensions Face Seal Glands.](#)

DESIGN TABLE								
FOR O-RING FACE SEAL GLANDS								
These dimensions are intended primarily for face type seals and low temperature applications.								
O-RING SIZE	W		L	SQUEEZE		G		R
	CROSS SECTION			GLAND DEPTH	ACTUAL	%	LIQUIDS	
AS-568	Nominal	Actual	GROOVE RADIUS					
004			.050	.013	19	.101	.083	.005
through	1/16	.070	to	to	to	to	to	to
050		±.003	.054	.023	32	.107	.088	.015
102			.074	.020	20	.136	.118	.005
through	3/32	.103	to	to	to	to	to	to
178		±.003	.080	.032	30	.142	.123	.015
201			.101	.028	20	.177	.157	.010
through	1/8	.139	to	to	to	to	to	to
284		±.004	.107	.042	30	.187	.163	.025
309			.152	.043	21	.270	.236	.020
through	3/16	.210	to	to	to	to	to	to
395		±.005	.162	.063	30	.290	.241	.035
425			.201	.058	21	.342	.305	.020
through	1/4	.275	to	to	to	to	to	to
475		±.006	.211	.080	29	.362	.310	.035
Special	3/8	.375	.276	.082	22	.475	.419	.030
		±.007	.286	.108	28	.485	.424	.045
Special	1/2	.500	.370	.112	22	.638	.560	.030
		±.008	.380	.138	27	.645	.565	.045

2.5 Robotic Fish Movement

Before it has been decided how the product will be designed, it is essential to know how the robot is going to move. Due to its purpose as a product for children to learn about programming, the fish must have simple movements. Therefore, there is not going to be centre in, up or down movements but only the movements of turning to the left or to the right, keeping at the same depth at all times.

2.5.1 Real Fish Movement

Studying the physiognomy of fishes, the research concluded that fins are the main organs that allows motion of the fish. Fins are composed bony spines protruding from the body. They are located in different places along the fish's serve for different purposes that are namely, moving forward, turning or keeping an upright position.



The most general type of fins are:

- Dorsal fin: located in the back thats purpose is to protect the fish against rolling.
- Caudal fin: This is the tail fin and its purpose is to propulse the fish. This will depend on the shape as there are different tails or caudal fins, but the most common is the homocercal tail.
- Anal fin: This is located on the ventral surface behind the anus. This fin stabilises the fish while swimming.
- Pectoral fins: Located in either side of the fish's body. It serves to create the dynamic lifting force and to maintain the depth.
- Pelvic or Ventral fins: These are located ventrally below the pectoral fins. They allow the fish to go up or down.

2.5.2 Other Robotic Fishes

As an example we take other robots fish to different forms of movement. In the following table (Table 6) we can see different models.








Table6: Examples of different robotic fish

Robot	Skills motion
<u>Robofish</u> 	Robot fish that is able to swim and recognize tank edges and obstacles
<u>MIT Robot</u> 	Autonomous soft robot that can execute an escape maneuver, convulsing its body to change direction as quickly as a real fish can

2.6 Controller boards

In the market of electronic boards there are countless different models depending on their characteristics as it can be their size. Here we can see some different models that we can find available on the market Table 7.

Table7: Examples of controller boards

CONTROLLER BOARD	SIZE	WEIGHT [g]	COST [€]	MICRO-CONTROLLER	USER I/O INPUTS	ANALOG INPUTS	PWM OUTPUTS	MIN OPERATING VOLTAGE [V]	MAXI OPERATING VOLTAGE [V]	RAM SIZE [b]
 ARDUINO UNO R3	2.95“ x 2.1”	28	26	ATmega328P	20	6	6	7	12	2048
 ARDUINO LEONARDO	2.88“ x 2.1”	20	22	ATmega32U4	23	12	7	7	12	2560
 ARDUINO MICRO	1.9“ X 0.7”	7	22	ATmega32U4	24	12	7	7	12	2500
 ARDUINO Nano V3	0.73“ x 1.7”	5	23.37	ATmel ATmega 328	14	8	6	7	12	2048
 TEENSY 3.0	1.4“ X 0.7”	5	16.90	MK20DX128 VLH5	34	14	10	3.3	3.3	1600
 TEENSY 3.1	1.4“ X 0.7”	20	17.60	MK20DX256 VLH7	34	21	12	3.3	5	6400
 TEENSY 3.2	1.4“ X 0.7”	20	17.60	MK20DX256 VLH7	34	21	12	3.3	5	6400

2.7 Robots

2.7.1 Educational Robots

Although our product is a robot, it is also a educational toy. We will take sample of other robot toys available in the market, so we can compare the features offered with different prices Table 8.

Table8: Examples of educational robots

ROBOT	DESCPRITION	PRICE [\$]
 <u>Sphero 2.0.</u>	Capability of rolling at speeds of up to 7 feet per second Works with iOS 4.0+ or Android devices with operating system 2.2+ Possibility of downloading free SPRK lessons and learn the basics of programming	99.99 €
 <u>mBot Robot Kit</u>	Based on Arduino open source platform Easy to assemble within 10mins Based on Scratch 2.0 and Arduino IDE Support wireless connection via Bluetooth	74.99 €
 <u>Ozobot</u>	Getting experience through creative drawing Sensors can even identify the colors and stick to one	49.99 €
 <u>WowWee MiP Robotic Companion</u>	MiP multifunctional and autonomous robot Perched atop unique dual wheels Gesturesense technology for hand motion controls Includes app to drive, dance, battle, balance Requires a BLE 4.0 (Bluetooth Low Energy) connection	99.99 €

2.8 Conclusion

To conclude, it was necessary to gather information on state of the art products and to expand previous learned knowledge. This lead to successfully designing and creating the didactic robotic fish. During our research it was established that the most suitable target market will be children between the ages of five and ten years old due to the educational purposes of programming, robotics and the appeal of this toy to the younger generation. Throughout this section of the report comparisons of several different robots and products were made to draw conclusions for the production of the robotic fish. As a group it was decided that the best method was to build a robot that had fairly simple movement and programming to prevent over complicating things for the young children that will be using this product. It was also essential that the materials, parts and components that the group had chosen were within the budget provided to us at the beginning of the project allocation, this was achieved with in depth analysis of the best available options in the market and by studying previous, similar products on the market.

In the next area of the report, the topic that will be discussed is the project management of the project. This chapter explores details of the requirements of the project manager and to observe how the work must be undertaken.

3. Project Management

3.1 Scope

This project's main task is to develop and build a Didactic Robotic Fish Kit. When starting any project, it is important to define the main targets and scope of activities.

Targets

- create user-controlled robotic fish suitable for children in age 5-10,
- use waterproofing materials which are safe for users,
- choose or create a programming language which is simple to use for children in the previously defined age range,
- create the fish in an inexpensive and open source manner.

The determination of the specific targets outlined above will help with defining what tasks will be needed to complete the project. This will allow the team to pursue their goal with reduced interference.

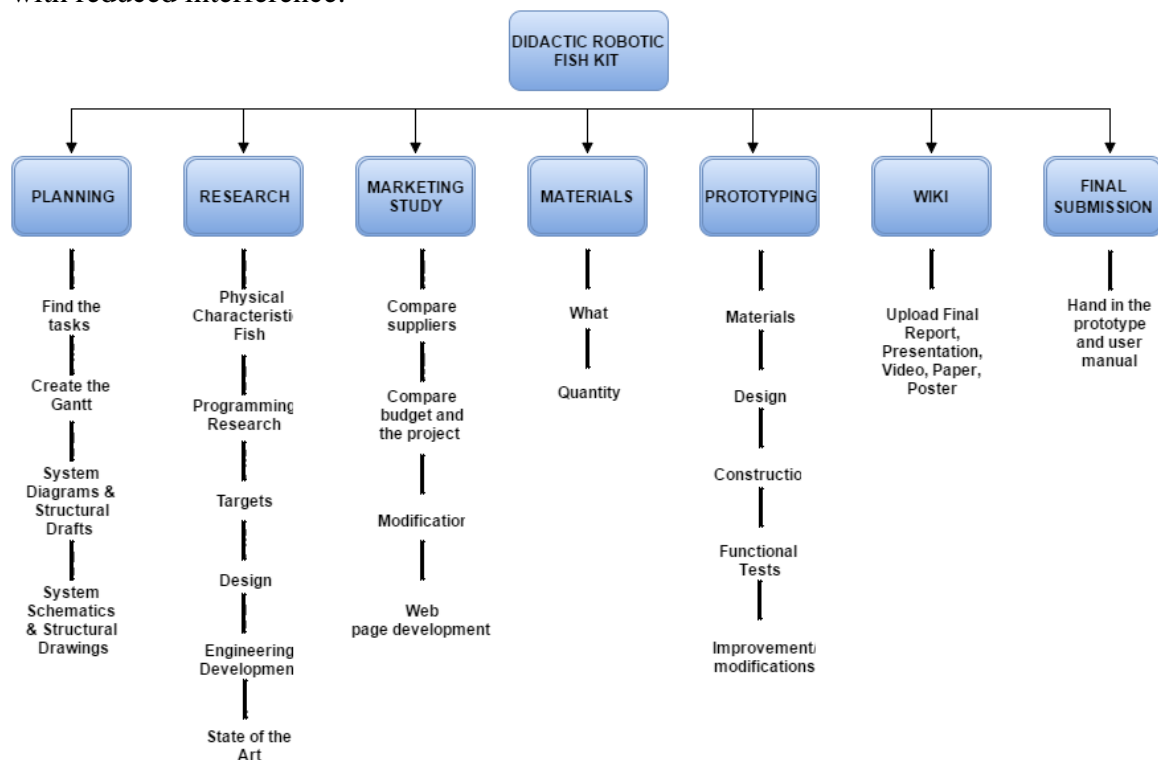


Figure1: WBS

3.2 Time

Time management is a very important concept in the accomplishment of a project. In this case, a Gantt Chart has proven useful because it is a trusty tool in planning how long project tasks should take. It also helps to sequence the events by laying them out in the order in which the tasks need to be completed. The Gantt chart that was completed is presented in Figure 2, on the next page.

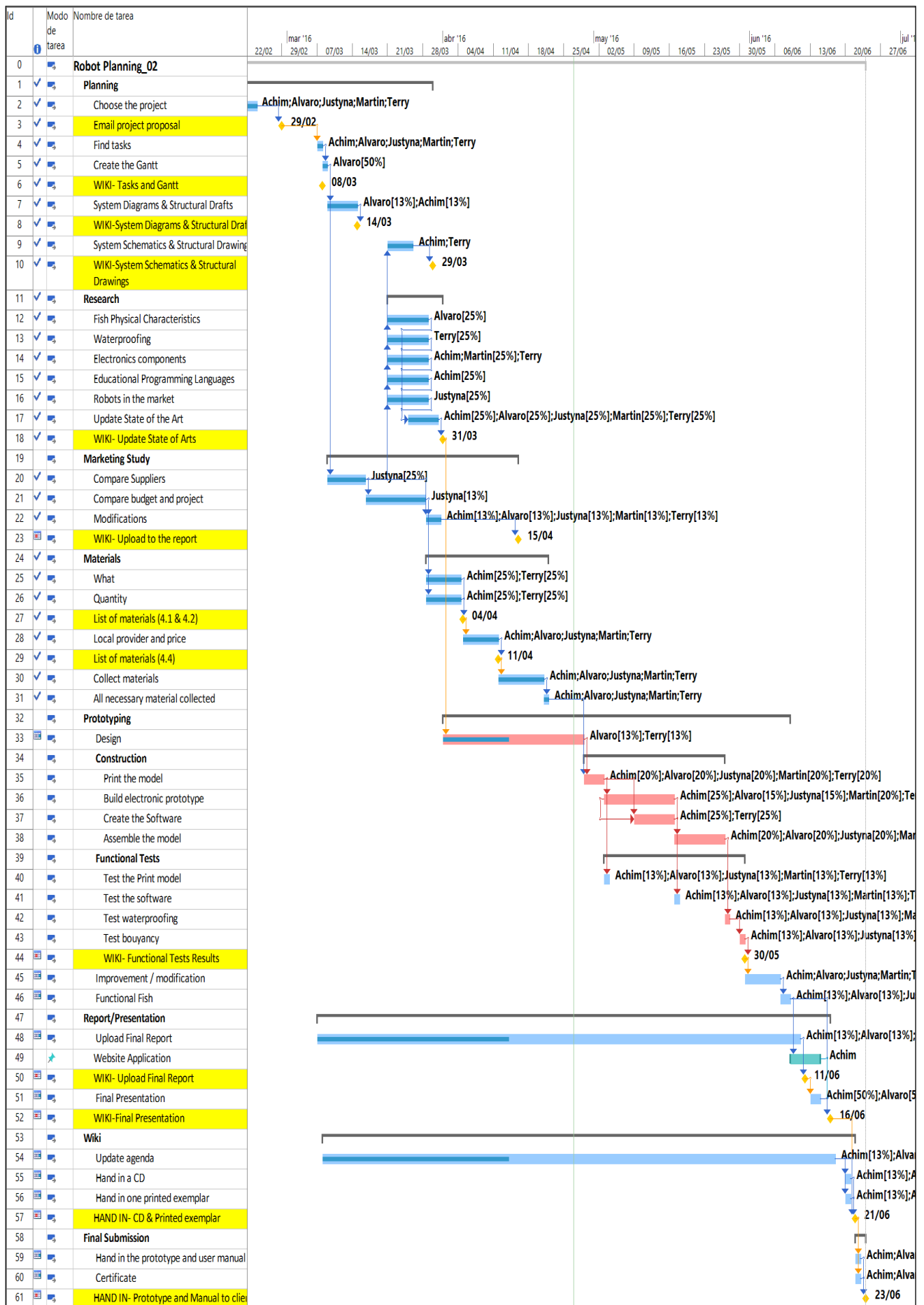


Figure2: Gantt Chart

Deadlines were attached to specific tasks based on the work plan, which was provided by the project supervisors. These can clearly be seen in table 9 below.

Table9: Work Plan

Deliverables	Deadline
System Diagrams &Structural Drafts	2016-03-14
System Schematics &Structural Drawings	2016-03-29
List of Materials (what &quantity)	2016-04-04
List of Materials (local providers &price - including VAT and transportation)	2016-04-11
Upload the Interim Report and Presentation to the wiki.	2016-04-16
Interim Presentation, Discussion and Peer, Teacher and Supervisor Feedbacks	2016-04-21
Upload refined Interim Report (based on Teacher &Supervisor Feedbacks)	2016-04-29
Upload the Functional Tests' Results to the wiki	2016-05-30
Upload the Final Report, Presentation, Video, Paper, Poster and Manual	2016-06-11
Final Presentation, Individual Discussion and Assessment	2016-06-16
Update the wiki with all correction suggestions; hand in a CD with the corrected deliverables (source + PDF) together with all code produced to the EPS coordinator; hand in one printed exemplar of the corrected report to the EPS coordinator	2016-06-21
Hand in the prototype and user manual to the client; receive the EPS@ISEP certificate	2016-06-23

3.3 Cost

Cost management is the planning of project's budget. For this project, man hours are being considered as part of the budget. Therefore, the entire 50 € budget is allocated to materials cost. For materials ordered online, the shipping cost also should be considered. Staying within budget is a demanding task because the goals of producing the highest quality prototype and finding low cost materials must be balanced.

A breakdown of material cost may be seen in Table 10.

Table 10: Material list

Material	Amount	Price [€]	Finally Price [€]
Arduino nano board	1	12.90	12.90
SG90 Micro Servo	3	5.95	17.85
LED (red, orange, green)	3	0.25	0.75
LED RGB	2	1.00	2.00
9 V battery connector	1	0.40	0.40
Resistor 330 Ω	10	0.05	0.50
Button	1	0.35	0.35
Voltage transformer 7805	1	0.80	0.80

In the Table 11 we can see the relation between the hours worked for each member and the cost of this hours for the project.

Table 11: Work cost

Worker	Work hours	Price [€/h]	Finally Price [€]
Achim	338,12	1,00 €/h	338,12
Alvaro	299,12	1,00 €/h	299,12
Justyna	290,12	1,00 €/h	290,12
Martin	275,12	1,00 €/h	275,12
Terry	339,62	1,00 €/h	339,62

3.4 Quality

Quality is significant for every product and brand. It is an essential consideration for companies because success is dependent on it. Customers can afford to buy only those products which meet their needs. It is expected that a company has to convince consumers to purchase product. What is more, the main target of a company should be to care about product's quality and customers' gratification. Quality in this project is extra important for one reason, the Didactic Robotic fish is intended for children. Therefore, materials have to be robust enough to handle potential misuse. In addition, components must be waterproofed because robot will be expected to operate in and under water. Robot is intended to be used as a teaching tool. These are the reasons unique to this project why Team Three will be held responsible to produce a high quality product. This robotic fish is meant to get young children excited about programming, making a high quality fish essential. A low quality product could potentially serve to frustrate children, turning them off of programming entirely.

3.5 People

Each member of the team studies a different subject, this has allowed increased support as each person has different knowledge, previous experiences and abilities. The diverse backgrounds combined with a common commitment will come together well in creating the Didactic Robotic Fish Kit. It is demanding but also greatly rewarding and so we have divided individual tasks between the team members as can be seen in table 11. This division of labor ensures the best usage of time and that each team member is working in their specific area of expertise.

Table12: RACI

Responsible Accountable Consulted Informed	Terry	Achim	Justyna	Martin	Alvaro
Update the Gantt	CI	CI	RA	CI	CI
System Schematics & Structural Drawings	RA	R			R
Programming Research	C	RA		C	
Programming	R	RA			
Design	RA	I	I	I	R
Calculations eg buoyancy, propulsion	RA				C
Compare suppliers		R	RA	R	
Compare budget and the project	C	C	RA	C	C
Design Modifications	R	I	I	I	RA
Construction	RA			R	R
Functional Tests	R	RA			
Upload Final Report	C	C	C	RA	C
Upload Video		RA			
Project Website		RA			

3.6 Communications

Since project tasks are divided between team members, good communication is one crucial aspect to ensure everyone remains up-to-date with project developments. If team member are unable to meet face to face then communication will be carried out through the internet and phone applications to discuss project matters. However, it is important that there are regular face to face meetings, where the next steps to be taken for our project will be discussed. These meetings are used for open discussions about advantages and disadvantages of particular solutions. When not in direct contact, it is important to utilize Facebook, email, google drive, and group messaging applications like whatsApp to communicate. These allow us to stay in constant contact in order to provide updates, make group decisions and exchange files anytime and in anyplace.

Communication is not only important between group members, but it is also essential to maintain a good dialog between the supervisors and the team. Every Thursday the project supervisors organize a meeting where the team may discuss the project and ask any pertinent questions. The supervisors will answer questions to the best of their ability and will try to improve upon any ideas that we have shared, steering us in the best possible direction.

3.7 Risk

Risk management is a prediction of situations which can impact and break down project. In order to avoid unnecessary problems, the team should be prepared for any eventuality and ensure that it is resolved. To aid the team in risk management, a risk register was created. This may be seen in Table 12, on the next page.

Table12: Risk register

ID	Description	Cause	Effect	Trigger	Response	Owner	Last review
1	Problems with communication between the Arduino software and hardware.	1.Board doesn't work correctly. 2. Cables are broken. 3. Mistakes in wiring.	1. Replace the board. 2. Check and replace the cables. 3. Reconceive the concept. [TIME,COST]	Check the board early enough.	1-2 If board and cables don't work it must be accepted and replace them. 3. Mitigate it by checking it frequently. [ACCEPT, MITIGATE]	Achim, Justyna	2016-05-26
2	Waterproofing problems	Fish is not waterproof and water gets inside.	Conduct tests without any electrical components inside. [TIME,COST,SCOPE]	Check waterproofness of every component.	Avoid by testing a waterproofness of the fish without any electrical components. [AVOID]	Terry, Martin	2016-05-26
3	3D printer will not work as expected.	Printings are in a bad quality.	We have to print every component again. [TIME,SCOPE]	Try to print one part of model and check it. The next solution is to change 3D printer.	Transfer because it is responsibility of ISEP. [TRANSFER]	Terry, Alvaro	2016-05-02
4	Illness of team members	Don't enough rest.	If it is possible, the absent member do task at home. Otherwise another member of the group can divide the absent persons task. [TIME,COST,SCOPE]	Care about your health.	Don't go out at night. Go to bed early. [ACCEPT]	All	2016-06-23
5	Damaging electrical components or materials.	Improper use.	Replace electrical components [TIME,COST]	Functional test	Buying a new components. [ACCEPT]	Martin	2016-06-23

3.8 Procurement

Procurement management can help to purchase goods and services from external suppliers. This is crucial because we have to pay attention to the quality and costs related to potential postage. On the market there are many suppliers to choose from and it could be from a local shop or online website. For this project, the focus is on succeeding criteria concerning the choice of the supplier. It is:

- quality,
- time of potential postage,
- price,
- service,
- reliability,
- location.

3.9 Stakeholders management

Stakeholders management is relevant issue because thanks of it team is able to pinpoint people who have direct influence on the project. It includes also interest and power. Table 14 below shows stakeholders who have influence on the project.

Table13: Stakeholders management

Who	Role	Expectations	Power	Influence
Team members	Creators of the project	Dedicated and successful. Complete scheduled tasks. Participation on weekly meeting.	High	High
Benedita Malheiro	Supervisor	Supervise an interesting project.	High	High
Manuel Silva	Team supervisor			
Pedro Guedes	Team supervisor			
Lecturers	Teacher	Expect taking part in classes and gain knowledge which is necessary to do WIKI	Low	Medium
IT sensor	Sponsor	Deliver a project	High	Low
Suppliers	Provider	Provider of our components	Low	Low

3.10 Conclusion

To conclude this section of the report, the main objective was to organise the project planning in a clear and efficient manner. This was vital to the project as it allowed a positive working environment and each team member could clearly identify time limit and the exact tasks that they had been provided. To begin this process, the team took part in constructing a Gantt chart that highlighted the time limits and specific tasks for individual members of the group and this helped to maintain a positive environment. It also allowed visible identification of certain areas that would require more time and effort than possible smaller and less time consuming areas. Quality control was another vital aspect of the report and had to be undertaken effectively to ensure that the product would satisfy the demands of the clients and customers.

4. Marketing Plan

4.1 Introduction

Marketing is a society process in which an individual or groups get what they want by creating, offering, unfettered exchange goods and services. The main marketing tool is the marketing mix. The most popular market concept is 4P: product, price, place, promotion. The shortest definition of marketing is to “satisfy a need and make a profit”. Marketing divides on:

- **Micro Environment** In micro marketing, all the focus is on a small segment of a consumer and on them specific needs for the products which occur in the market.
- **Macro Environment** Macro marketing is large in scope. It more focuses on aspects that goes beyond the scales of micro marketing. It researches all of the market, not only our product's market.

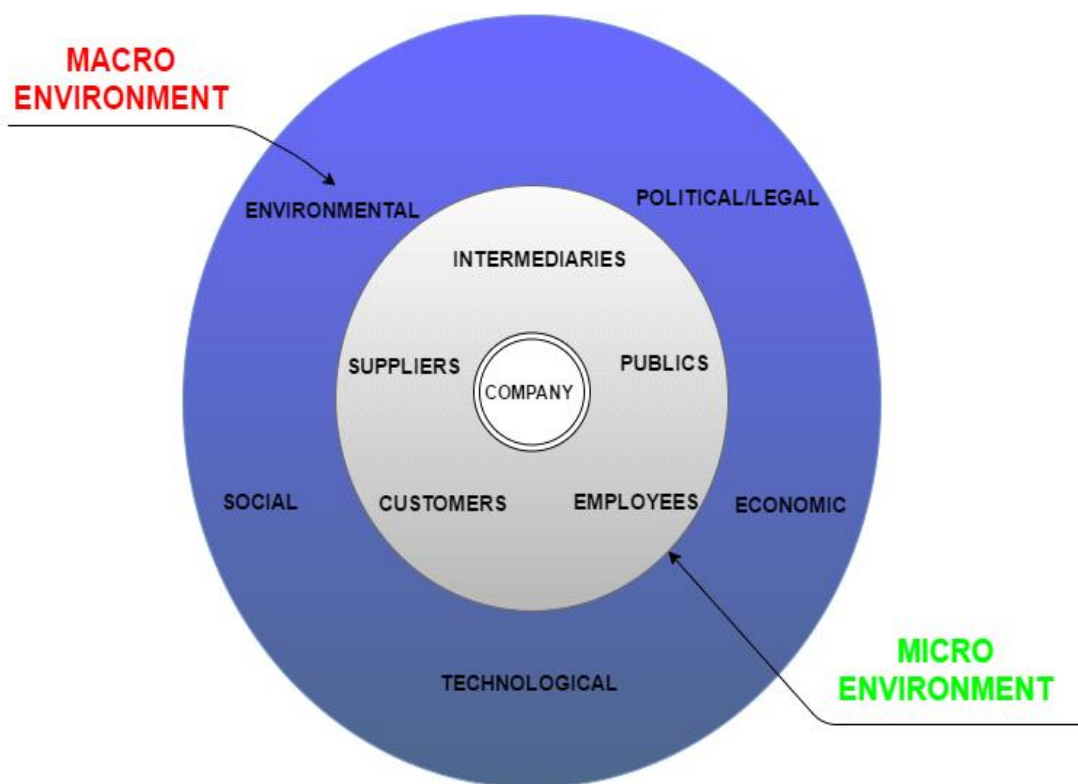


Figure3: Micro and Macro Environment

4.2 Market Analysis

The focus of this section is the hardware that will help us to present robot's market. To present macro environment we use PESTEL. It is a helpful software that enables the consideration of political, economic, social, technological, legal and environmental factors in decision making. It allows us to describe the impact another field has on enterprise.

4.2.1 Macro Environment

PESTLE analysis is in effect an audit of an organisation's environmental influences with the purpose of using this information to guide strategic decision-making.

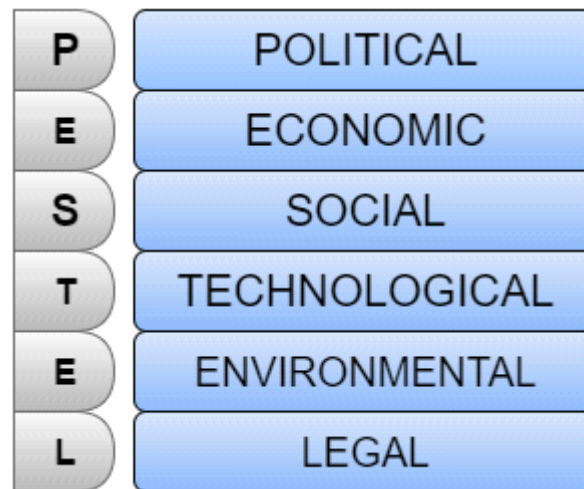


Figure4: PESTEL

4.2.1.1 Policy/Legal

The government has a huge influence on a company's marketing activities and they decide which goods and services should be delivered to its citizen. For instance, the government bankroll companies which will have a major impact on a companies' organisation. Therefore, every enterprise should comply with the law and regulations of the country where they wish to market their products.

For this project, it is important that the design complies with The Toy Safety Directive 2009/48/EC. The scope of the 2009 Toy Safety Directive is covered by Article 2. It provides a definition for what a toy is, and therefore determines whether a product falls under the scope of the Directive:

“Any product or material designed or intended whether or not exclusively for use in play by children under 14 years of age”.

Obligations of manufacturers

Manufacturers i.a. shall:

1. ensure that the toys been designed and manufactured accordance with the requirements set out in Article. 10 and Annex II.

2. keep technical documentation and EC declaration of conformity for a period of ten years
3. apply procedures are in to ensure conformity of series production . should be take account of changes in design or characteristics toys and changes in the harmonized standards , by reference to which conformity toys.
4. carry out a safety assessment of the toy
5. make sure the toy is accompanied by instructions for safe use and safety information where appropriate
6. ensure that their toys carry a type, batch, serial or model number or other allowing their identification. Information provided on the packaging or in a document accompanying the product.
7. make sure the toy is accompanied by instructions for safe use and safety information where appropriate
8. make sure that continuing production runs of the same toy remain in conformity
9. carry out sample testing of marketed toys

4.2.1.2 Economic

In Europe the toy industry develops dynamically. Every year about 60% of toys on the market are new products. Within European Union there are some 5.000 toy companies which employ 222.000 people in the sector. The EU market currently represents 28% of worldwide traditional toys and games sales.

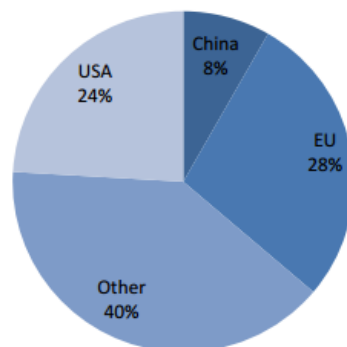


Figure5 Sales of traditional games and toys by country.

The most popular catagories of traditional toys and games in EU markets are games and puzzles and infant and pre-school toys. Construction toys, dolls and accessories, and outdoor and sports toys follow top selling categories.

Traditional toys and games are dominated by brands such as Mattel Inc, LEGO Group, Hasbro Inc. Together their combined market share in the EU is almost 27%.

The five leading toy markets in the EU – France, Germany, Italy, Spain and Great Britain.

4.2.1.3 Social

Nowadays, people can only afford to buy products which meet their needs. In the market of robots, the most popular are household robots which make our life easier. This project presents a demanding task because there are already several robots for children on the market. Parents try to find something what develop their kid's skills and that will be respectively at a low-cost. Therefore, Coduino is opportunity to teach kids more about programming.

.

4.2.1.4 Technological

Today everyone must move with the times and carefully follow innovation to stay up to date with technology. Industrial development is very fast thereby costumers/consumers have greater demands. For this project, specific concerns include technological details like breadboard, sensors and the battery.

4.2.1.5 Environmental

Nowadays environmental concerns are a crucial aspect because creators are expected to use components which can be recycled and will not be dangerous for the environment. These concerns have become progressively more important due to the increasing scarcity of raw materials, pollution targets, ethical and sustainable concerns facing companies, carbon footprint targets set by governments (this is a good example were one factor could be classes as political and environmental at the same time). These are just some of the issues marketers are facing within the environmental realm. More and more consumers are demanding that the products they buy are sourced ethically, and if possible from a sustainable source. The components of Coduino which are easily recycled are the 9V battery and polylactic acid body.

4.2.2 Micro Environment

4.2.2.1 Suppliers

The choice of suppliers is very significant concern. The team tries to choose the most reliable supplier who will deliver components in the shortest time and the lowest-cost of the package. It is also important to be sure that components will be delivered on time because of project deadlines. So it has been determined that Botnroll, Mouser Electronics, and Ptrobotics are reliable suppliers.

4.2.2.2 Customers

Customers play the main role in the creation of a company, brands. They are a major factor which has a big influence in developing a company. Thanks to the role of the customers, companies have an opportunity to relieve its position in the market. As regards to this project, the main customers will be:

1. Buyers (parents, fan of toy robots)

When considering buying a didactic children's toy, there are two main aspects a parent may consider. First is a price, which plays a crucial role in choice of this robot. Second is the usefulness in teaching new things their children.

1. Companies like:

- MATTEL - An American multinational toy manufacturing company. The products and brands it produces include Fisher-Price, Barbie dolls, Monster high dolls, Winx Club dolls, Hot Wheels, Hot Birds and Matchbox toys, Masters of the Universe, American girls dolls, board games, and WWE Toys.
- HASBRO - is an American multinational toy and board game company. It is one of the largest toy makers in the world.

4.2.2.3 Competitors

Within a few years, competition within the robotics and automation industries will increase. While designing, Team Three has to be aware that every person who has proper components, money, and knowledge could create similar robots. The main agents to combat this are quality and advertisement. Therefore, the team has prepared the logo and a flyer. On the grounds of earlier gained knowledge and experience a user-friendly, low-cost robot will be created. The biggest competitors in the field are:

- Soft Robotic Fish
- Tamiya ROBO
- Robot Fish by ITN source
- Team 1 - 2014 - Biologically Inspired Swimming Robot

4.3 SWOT Analysis

SWOT analysis involves segregation of the available information about four categories of strategic factors:

- S (Strengths)element that is an asset, advantage, the advantage of the analyzed object
- W (Weaknesses) everything that is a weakness, a barrier defect analyzed object
- O (Opportunities)aspects that make for the analysis of a chance of positive change
- T (Threats) everything that makes for the analysis of a risk of unfavorable changes

Figure 6 shows our SWOT analysis.

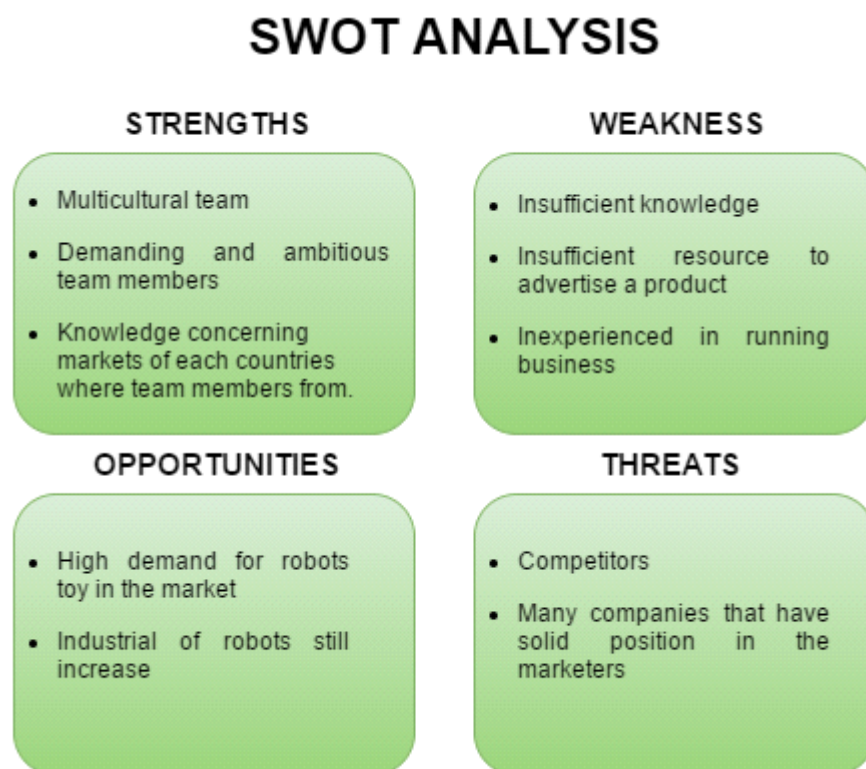


Figure6: SWOT ANALYSIS

4.4 Strategic Objectives

This section concerns the long-term success of Coduino within the next 5 years. To set the objectives team members used a system called, SMART. SMART stands for: Specific, Measurable, Achievable, Realistic, Time-bound. Thanks to this system a realistic approach to a particular task can be reached. It is:

- ameliorate the model
- to find permanent supplier who deliver all components
- the reduction of production costs in order to increase a profit
- the improvements in relation with clients, come up with their expectation
- new investments

4.5 Segmentation

Market segmentation is a marketing strategy where the task is to determine customers who will purchase a product. Segmentation involves dividing the population into smaller parts called segments, which differ in terms of customers' needs for the product, the method of purchase, and other selection criteria. After segmentation, the company must choose a segment in which it wants to sell their goods. The main purpose of segmentation is to analyse the structure of the market and the needs of the customers who make up the market. homogeneous markets can be distinguished in terms of structure and varied needs. To segment in the appropriate way, we used following division:

4.5.1 Demographical segmentation

Coduino is intended for boys and girls age 5-10. Therefore, the main clients will be fun of technology news, parents, and also grandparents. Running a business is easier if law and regulations of particular country is known by team members. After market research and learning particular directives concerning toys developed in Germany and Spain, an avenue for market expansion was planned. If this company can make a profit, the next markets will be France, Italy and Great Britain. To better understand the market the **table** below shows the estimated percentage division of the population in 2020.

Table 1 Percentage amount of the population in Germany, Spain, France, Italy, Great Britain in 2020

Country	Population	Children at age 5-10		Adults 20-100	
		Male [%]	Female [%]	Male [%]	Female [%]
Germany	80.392.000	2.2	2.1	40	42.1
Spain	46.193.000	2.4	2.3	39.2	41.5
France	65.720.000	3.1	2.9	36.5	39.5
Italy	59.741.000	2.2	2.1	39.5	42.4
Great Britain	66.700.000	3.1	3.0	37.2	39.1

4.5.2 Geographic segmentation

It is crucial to determine which countries that Coduino should be launched in. Another important concern is minding status and region. The main task is to find market where there will be demand for product. Awareness that product will be better received in some countries than others, is an important because consideration. Noting that the marketability of the product is connected with social status, lifestyle, and interest in technology news, which varies by country and region. Coduino is a robot fish, therefore and important

concern it to find places and regions where people have access to swimming pools and/ or bodies of water where they can use the product.

4.5.3 Behavioural segmentation

Sales of toy definitely increase around Christmas time. In December and January, purchases in toy shops raise about 20%. For every company, this is the best occasion to improve their financial situation. However, Coduino is a robot which people can use in amusement park where is access to swimming pool. So that demand for this robot will also increase in the spring and summer.

4.5.4 Psychographic segmentation

The main target reach customers who have the similar demands with regard to our product. Fans of technical news, parents, and grandparents will be preeminent clients. The first type of client demands new improvements and technological solutions. The second type of client require a robust toy, which should handle potential misuse and get young children excited about programing.

4.6 Strategy/Positioning

Positioning of company is a process that is aimed at creating positive associations. It focuses on how customers perceive a company and what positive qualities distinguish it from the competition. Skilful positioning leads to the formation of well-known brand with loyal customers. There are several options for positioning a company:

- striving to strengthen its position in the market, where the company is the leader;
- increasing or decreasing the diversity of product offerings, imitative action. This method of positioning involves the use of a good position existing products;
- the introduction of a product that does not exist yet on the market using the existing gap in the segment.

In this case, focusing on the second point is relevant in order to aid promotion and to increase the offer for additional services. Accordingly, offering different options like choice of fish color and adding some accessories or signatures that may appeal to clients.

4.7 Adapted Marketing-Mix

4.7.1 Product

Coduino will be built of Polylactic acid, which is robust enough to handle potential misuse. This is crucial because the product is intended for children in age range 5 – 10. The products programming language should be simple enough to use for children in the previously defined age range by means of ArduBlock. Connecting the robot to a computer and sending commands will enable the user to control its movement. The another thing is the shape which will be defined by the device's of use. Furthermore, the robot is being created to play the role of a toy.

4.7.2 Price

To buy the components will cost 38 euros plus the costs of parcel post. In the case of when the product requires mass production, costs look completely different because this will include direct and indirect costs of production.

Direct costs: labor, raw materials

Indirect costs: salary, cleaning supplies, utilities, office equipment rental, desktop computers and cell phones.

4.7.3 Promotion

Nowadays there are many devices to promote a product. Promotion is of upmost importance for and infant company because it will determine the future of the enterprise and the brand. To promote Coduino a website will be used as well as social media (Facebook). To increase communication with existing customers/consumers email may be used to offer them discounts. In terms of no digital advisement, flyers and billboards will be used. To plug the product, it can also advertised for on other websites. Furthermore, promotion within schools and shopping centres is meaningful as well.

4.7.4 Place

In this part the focus is the distribution channels for Coduino. Distribution is the process in which embrative decisions regarding the manufacturer and a final recipient. Distribution channels set of all entities (cells) through which one or more streams, associated with the operation of my marketing, flow. These include streams of the physical product flow, payment for goods. Factors influencing the choice of distribution channels include the following:

- Characteristics of the market segment
- Product features
- Characteristics of the company
- Structure of distribution
- Characteristics of other enterprises

4.8 Budget

Marketing budget is a pool of funds set aside by a company for more dynamic selling of their products in the market. Marketing expenses, as well as most of the costs incurred represent a certain investment, causing a certain effect. The immediate goal of creating and spending marketing budgets may be: increase brand awareness among consumers and/or trading partners; increasing the purchase of products, resulting in increased turnover and market shares of the manufacturer; prevent similar actions of competitors to protect its sales or market share. Marketing budget includes elements related to the preparation of a new product to market, actions directed towards communication with customers and trading partners, and market research.

Our budget:

1. Advertisement
 - leaflet – 200 euro
 - websites - 1000 euro
 - posters - 250 euro
 - facebook – 100 euro
 - trade fairs – 600 euro

Table 2 Fair trades

Fair trade	Country and city	Date
Suisse Toy	Bern, Switzerland	06. Oct – 09. Oct, 2016
Toyzeria	Istanbul, Turkey	27.Oct - 30.Oct, 2016
Interpädagogica	Vienna, Austria	10.Nov - 12.Nov, 2016
G! Come Giocare	Milan, Italy	18.Nov - 20.Nov, 2016

1. Other expenses

- business trip (airline ticket, accommodation, maintenance) - 1200 euro
 - a) Bern, Switzerland
 - b) Istanbul, Turkey
 - c) Vienna, Austria
 - d) Milan, Italy
- courses for employee – 400 euro

4.9 Strategy Control

The purpose of the control of the plan is to ensure that sales, profits and other objectives contained therein is achieved by the company. The company also needs control of profitability by product, geographic areas served segments or distribution channels. It helps decide whether any products or marketing operations should be extended, reduced or eliminated.

4.10 Conclusion

To assess the possibility of the development of our product on the market, we examined the macro and micro marketing. In order for micro marketing to be successful, team members used the method of PESTEL analysis. Coduino will be developed in countries located within the European Union. As a result of this, the team has become familiar with the laws and regulations that apply to toys. In addition, we selected the 5 countries in which the product will be able to grow over the next 5 years, these are: Germany, Spain, France , Italy and Great Britain. With regards to macro marketing a SWOT analysis was created, to help identify the strengths, weaknesses, future opportunities and also any potential threats. The team carefully researched different suppliers to find out the best company to use for price and quality to provide the best possible components. The team has also established product promotion method. There will be a flyer , advertising and the creation of a website all contributing to boosting promotion of coduino. Another type of promotion shows where we will be able to familiarize potential customers with the product. To summarise, the product is designed for children aged 5 to 10 years, therefore it must be of very high quality and be easy to use.

5 Eco-efficiency Measures for Sustainability

5.1 Introduction

The main purpose of sustainable development is to provide solutions for the preservation of natural resources. Its target is to spare water and to reduce humans' negative impact on the environment and human health. In general, there are three different subsections of Sustainability Joshua J. Yates, 2012. [*Abundance on Trial: The Cultural Significance of "Sustainability", month =.*](#)

- Economic sustainability is concerned with creating a healthy and stable business.
- Social sustainability is concerned with creating a fair and decent work environment.
- Environmental sustainability is concerned with using energy and resources efficiently and sustainably, without producing trash..

In this project, sustainability is an important aspect regarding reusability, environment friendly materials, and eco friendly transportation.

5.2 Environmental

The purpose of environmental sustainability is to protect the natural environment and its resources, preserving the human habitat. The interest in this topic has been on the rise in the last few decades and continues to increase. The necessity of this topic has already reached a high awareness level. As a consequence, many companies are trying to change their productions to be more environmental friendly. For this didactic fish, it is important to take the aspects of environmental sustainability into consideration when selecting materials and production techniques. Daly, Herman E., 1990. [*Toward some operational principles of sustainable development*](#). *Ecological Economics*, 2, pp.1–6, ISSN 0921-8009.

To create the body of the fish, team three is using PLA (polylactic acid). PLA is a plastic made of renewable resources. Commonly, the raw materials used to create it plant products like cornstarch or sugarcane because of this, the material is biodegradable and can be disposed without having any long-time negative impact on the environment.

The product will be sourced using only local suppliers. This eliminates carbon footprint created by long distance transportation.

For the selection of the electrical components, it is important to use components with a low energy consumption. This aspect affects the product's electric consumption and the longevity of its batteries. To keep a product consumer-friendly, regular batteries over the counter batteries will supply its power. Therefore, it is important that rechargeable batteries are used. These batteries are more expensive but may be recharged up to 2000 times, meaning they are more eco-friendly and will save a user money over time. Nickel–metal hydride batteries are the preferred option because of their high number of recharge cycles and their high capacity compared to other batteries. Alexander Osterberger, sep 2011. [*Batterien: Akkus sind nachhaltig*](#).

Coduo's design will allow for the easy replacement of broken components. Consequently, the consumers will not have to buy a new product if any part of the toy should break. They will only have to replace the broken component. Therefore, the product will not create as much trash, which protects the environment.

5.3 Economical

The purpose of economical sustainability is to provide strategies which optimize the use of existing resources. This is necessary to produce efficiently and profitably over a long period of time.

An important aspect of an efficient economy is the contribution of the local economy. For this reason this project will acquire all components from local providers in Portugal. Through this, the economy of the country is supported.

By playing with the didactic robotic fish, kids are making their first steps in a programming environment. By keeping Coduino's price low, children disenfranchised by similar, but more expensive, products will be able to explore the world of programming for the first time. This initial exposure can foster talent the interest in the field of programming. In today's world, where software engineering is an important ever growing field, qualified programmers are an important force in the growth of the economy.

5.4 Social

Along with economical and enviromental sustainability, social sustainability is the third pillar of sustainability. However, social may be the weakest of the three pillars, largely because people cannot agree on which way is up. The general definition of social sustainability is *the ability of a social system, such as a country, to function at a defined level of social well-being indefinitely* [definition of social sustainability](#). apr 2016.

Social sustainability can also be defined as *the life-enhancing condition within communities, and a process within communities that can achieve that condition*

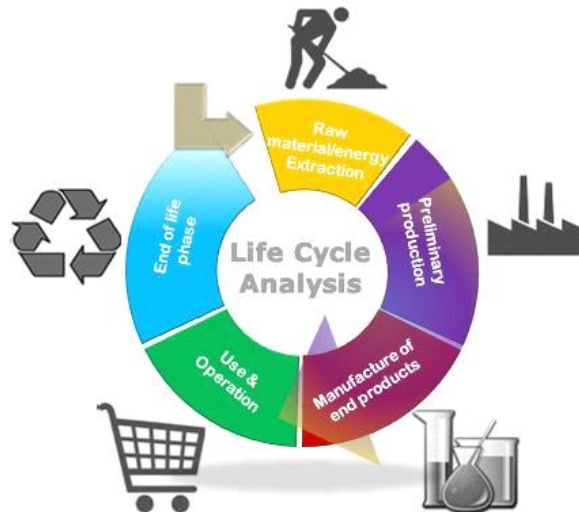
Based on these ideas, Coduino has been developed with the ideals of help the society eradicate the gap between the rich and the poor, to build a society on equal terms. Horace Mann is famous for stating that, “education then, beyond all other devices of human origin, is the great equalizer of the conditions of men, the balance-wheel of the social machinery”, and it was with this in mind that Coduino was developed. It its own small way, this project will contribute to defense human rights and push society towards more equal footing.

Coduino is an affordably priced, manufactured toy, whereby children and their parents will be introduced into the electronic world. Children of all walks of life will be able to learn programming from their own toys. The digital world is rapidly expanding, and command of this world is arguably one of the most marketable and profitable skills you can have today. So getting children interested young and teaching them the basics of programming is one of the best things that can be done for their futures. Unfortunately the threshold price to access toys similar to Coduino is much higher than many parents can afford. By keeping Coduino's price as low as possible, while still providing a fun a educational toy, lower income families will be able to set their children on an early path to success.

In short, with this robot fish many more children will have access to a fun and easy way of study something, which could help them to build a better future for themselves and the world.

5.5 Life Cycle Analysis

During all the development of this project Team Three took into account the life cycle of their product. One of the main targets of the project is make children realize that it is not necessary to throw out something that has stopped working or lost its usefulness. Kids should know that if an object is not functioning in a useful way, there are several options besides the trash. When confronted with a broken or obsolete item, the first question to ask is can it be fixed? With a simple tune up or a couple replaced parts, would the object be operational again? If no, it cannot be fixed, there are still several better options than a landfill. Perhaps the object can be repurposed to perform a new task, and if not almost all materials can be recycled and reused.



5.5.1 Raw Materials Production

As has been mentioned before, all components and materials for this project will be purchased from local suppliers. We have searched specifically for supplier in Porto that source recycled materials. Additionally the body of Coduino will be printed in PLA plastic. PLA it is a biodegradable material, made of renewable resources.

5.5.2 Preliminary Production

Such as we are going to buy all the different components in Porto, we don not need to product or manufacture any electronic component. That is why the unique preliminary production that we have to do it is design the pieces of the fish and print them with a 3D printer. Therefore, the unique waste of energy it is consumed by the 3D printer.

5.5.3 Manufacture of end products

During this phase, construction will be performed with human labor (team members) and the machines required to assemble all the pieces of the fish, with all the electronic components connected inside. This phase is the last one in which team members will have access to the product. So it is last opportunity to perform any modification in the project. After manufacturing the product will be packaged, distributed, and finally delivered to the customer.

5.5.4 Use and Operation

Like the name of the project suggests, the Didactic Robotic Fish Kit is more than a simple toy for children five to ten years old. It is didactic meaning it has been developed to educate. Children using Coduino will learn the basics of how to build and program their own robot. Upon receiving the kit, kids will need to assemble the main body and the tail prior to starting to program its motion. This step in the life of the product is as important as the manufacturing before because if the customer does not correctly follow the instructions in the provided manual, the fish will not function correctly.

5.5.5 End of life phase

In last phase of the cycle, Coduino demonstrates one of the aspects that sets it apart from the competition. One of the main goals in this project is to provide a product with a long life cycle. To this end the customer will be allowed to purchase new parts to replace any damaged components, without having to buy a entire new fish. The customer simply has to buy a new component from a local supplier, and will receive a discount if returning the original, damaged component to be recycled.

5.6 Conclusion

Nowadays sustainable development is one of the most important aspects to consider in creating a product for all companies. Coduino would not be less, so one of the objectives for which has been developed is to educate children that what it broken not need to be thrown away, but may have a second use or may be recycled for reuse. This fish robot intended as an aid for parents in educating their children in an environment that respects the environment, which supports sustainable development and raise awareness of the need to leave a better world to future generations.

6 Ethical and Deontological Concerns

6.1 Introduction

An ethical concern is a set of problems that will affect a person or an organisation. Ethics is a study of morality and the organisation must decide upon whether concerns that are affecting them are morally 'right' or 'wrong'. It will also determine which principles, policies, laws or actions are intact morally justified.

Deontological concerns follow the same principles as ethical concerns as they are defined by the morality of choice by an organisation to take certain actions they feel are necessary. Thus, it is essential that both of these sectors must be evaluated before finalised decisions are made by the organisation.

With regards to the project that the team has undertaken, there are five critical points that are in relation with both ethical and deontological concerns. These categories are as follows; Engineering, Marketing, Academics, Environmental and finally liability ethics. It is pivotal for the construction of the project that each one of the topics mentioned are fully taken into consideration when making decisions.

6.2 Engineering Ethics

Engineering ethics consists of the responsibilities and rights that must to be declared by those working in engineering, and also of desirable ideals and personal commitments. This section is one of great importance due to the project focusing almost solely on engineering. This particular type of ethics is the study of decisions, policies and values that are morally desirable within both the research and practice of engineering. Once more engineering ethics involves being fair, honest, respectful and meeting the expectations of the client. El-Zein, Abbas, 2013. [As engineers, we must consider the ethical implications of our work | Abbas El-Zein](#). *The Guardian*, Guardian News and Media.

Safety is another critical aspect of engineering ethics to ensure that work being carried meets the standards set by health and safety regulations. Ethics are critical in stressing an engineers responsibilities but also the freedom to conduct them. The essential acts that engineers must oblige to are as follows:

Only engineers that are qualified to do so may complete tasks given to them. To ensure the safety regulations and standards are met even exceeding those expectations to provide the highest level of safety possible for the working environment. Engineers are required to carry out any assignments that have been appointed to them by their employers or customers to the upmost best of their ability.

The tasks that are provided to the engineer must be completed in an ethical, respectful, law abiding manner to prevent loss of reputation and professionalism and to honour agreements made prior to the beginning of construction. Finally, engineers must at all times when dealing with public, provide accurate and honest opinions, objectives and planning to the client. Thus, allowing the client not only to trust and respect your ideas but to enhance your own reputation.

6.3 Sales and Marketing Ethics

Ethical marketing is a process that will promote a fair, honest and responsible working place in advertisement. It follows the same ideas as all ethics and is essentially analysing different options of what is morally 'right' or 'wrong'. This particular form of ethics exists to form a main set of guidelines that will enable assistance to an organisation whilst they consider new strategies or ideas. Ethical reasoning must take place within the organisation and this can only be accomplished by reviewing the six different sections that exist within Marketing ethics. Cleverism, Jan 2015. [Social Responsibility HYPERLINK "http://www.cleverism.com/social-responsibility-ethics-marketing/" & HYPERLINK "http://www.cleverism.com/social-responsibility-ethics-marketing/" Ethics in Marketing. Cleverism.](http://www.cleverism.com/social-responsibility-ethics-marketing/)

First and foremost, it is of great importance that research must be undertaken before moving on to any other sector. Problems often arise in the following areas of marketing research:

- The relationship between the researcher and the client
- Between the researcher and the researcher subject
- Between the researcher and the marketing research history

Once business has been completed between both the company and the client the research that has been completed must be private and also secure. More importantly if this research becomes no longer necessary then it must be deleted. Customers are the most important part of any organisation and therefore interactions with the customer must be done so in an honest and respectful manner. It is crucial for the group to ensure that they receive the product that fulfils both their needs and expectations.

Pricing is vitally important in terms of sales and marketing as not only must the project team make a profit but also provide the customer with a fair price of the product that meets expectations and both parties agree to. It is essential to avoid what is deemed as 'unethical pricing' such as:

- Price fixing
- Price discrimination
- Variable pricing
- Creating pricing wars
- Bidding

Competition exists in any work environment with many different organisations producing similar products or working methods. Sales and marketing ethics comes into effect in order to compete in a respectful manner and to create fair competition between competitors.

Most importantly, safety is critical for the production of the project. The team has the responsibility to provide a product that is safe and provides no great risk to anyone involved. The monitoring of the manufacturing process is very important and to consider the common misconception that the majority of accidents are a result of the misuse or abuse of the product.

The final section that exists within Marketing ethics is once the product has been successfully constructed, it is then possible to move onto the promotion stage. It is key that during the promotion of the product that it will be done so in a professional manner without the introduction of any false promises or even deceptive marketing where customers could receive misleading information about their potential purchase.

6.4 Academic Ethics

Academic ethics or academic integrity is essential for educational purposes and to allow fairness in educational practices. It is fundamentally an ethical code that exists in the area of academic study, actively working to maintain academic standards within a school or higher education facility and to avoid the potential of plagiarism and even cheating.

To define the act of plagiarism, it exists in the case where a person has intentionally or unintentionally copied exactly from someone else work or where they have used words from another persons work without the use of appropriate references. Thus, in our group we have worked together to ensure the use of proper quotations to avoid an accusations of plagiarism.

On the other hand cheating is another heading that falls under the academic ethics code. The attempt from an individual or a group that presents work that is not their own or aided another individual by conferring answers when they have been informed that the work is to be performed on individually. Once more the team had to make sure that any ideas that were referenced for the project, were done so correctly and appropriately, ensuring it is individual work and to avoid any situation of being accused of cheating. It is important that the work produced is genuine and as original as it can possibly be, this making the product different from other competitors and allowing it to stand out in the market Cleveland, P M, Mar 2014. [Academic Ethics and Integrity](#). *Pine Manor College*.

6.5 Environmental Ethics

Environmental ethics is a study of how ethics play a part in the relationship between human beings and the environment. Within environmental philosophy, environmental ethics is a form of ethics that will examine the ethical relationship between humans and the natural environment. This form of ethics highlights the responsibilities of humans on the natural environment as humans are part of that environment and therefore should be protecting, not destroying it. Environmental ethics also takes into consideration a significant amount of regulations that include, law economics geography, sociology, theology and ecology.

It is vitally important that humans respect and honor the belief of the environmental ethics code that firmly believes that humans, plants and animals are both part of society. At present, the world is facing many problems that are affecting the natural environment due to incorrect disposal of harmful items and an increase in CO2 emissions. These factors have lead to the creation of several issues that are harming the earth, these include global warming, global climate change, pollution and the degrading of resources. Environmental ethics comes into effect to ensure that we as humans are helping to save the world and keep the environment protected. Dunn, Stephen, Jul 2014. [What are Environmental Ethics? - Conserve Energy Future](#). *ConserveEnergyFuture*.

Due to a significant and continuous rise in the earths population and ignorance towards the environment, there has been a rise of many environmental issues that are deeply concerning, these include, overpopulation, waste, the formation of acid rain, climate change, reduction in the ozone layer, urban sprawl and finally global warming.

This is why it is vital for the group to continue to follow the codes of environmental ethics and to do perform our duty by carefully selecting the best available materials that are not a danger to the natural world. It can be as simple and ensuring that everything possible has been done to attempt to reuse materials, preventing the need for the creation of new components. The design of the robotic fish will be done so with regard to the environment are where possible a design will be created that can be environmentally friendly.

6.6 Liability

The final section of ethics is called liability ethics. A legal liability is one in which a person is responsible for their own actions and involves a person breaking the law whilst taking part in certain work. As a group it is essential to acknowledge the main responsibilities towards the supervisors and to the customers. Therefore, in the unfortunate case of any error taking place whether it was intentional or unintentional we must accept the consequences of what has taken place.

Furthermore, the group must also be aware of potential complaints and dealings with unhappy customers. There is the potential to receive a variety of complaints from the general public and must ensure that reasonable complaints must be dealt with efficiently and respectfully. However it is possible to prevent an unfortunate situation like this occurring and that is by defining the terms of warranty clearly and any other aspects that the customer should be made aware of.

The finished product must also come with appropriate safety measures that will be listed within the users manual to prevent the risk of health and safety and to avoid a backlash from dissatisfied customers. This point is even more pivotal to the group as the target market has been set for young children between the ages of five and ten years old and there is the potential for a young child to swallow small pieces.

With regard to the groups particular project, it is key to respect and understand the concepts of both the liability measures and follow them correctly. We must also ensure that the health, safety and equipment that is used is at no risk to any of the team members, supervisors or the clients.

In order to complete the creation of the didactic robotic fish it is essential that we comply with the following EU directives:

- Machine Safety Directive(2006/42/CE2006-056-17)
- Electromagnetic Compatibility Directive(2004/108/EC2004-12-15)
- Electrical Electronic Equipment Directive(2002/95/EC2003-01-27EU Com, Aug 2013. [EEI Directives](#). - *European Commission*.

6.7 Conclusion

To conclude, the main ethical and deontological concerns were examined and the group now has a greater and wider understanding of these concerns and how they should be addressed. The team looks to be ethical in every way possible throughout the continuing construction of the robotic fish to ensure the product meets the demands that were initially set. The team is one of a broad range of backgrounds and each one of the ethical sections applies to each person whether they are from a marketing or engineering background.

7 Project Development

7.1 Introduction

Coduino, is a didactic robotic fish that will be created as an educational learning tool aimed at targeting young children between the ages of five and ten years old. The team found inspiration in the development of the product by researching existing products and similar ideas before coming up with our own unique design. The project development stage will highlight team progress, focusing mainly on the development of a prototype. Throughout this stage, there is more of a focus on the engineering side of the project with different structural drawings, a 2D and 3D model, components list and finally a electronic schematic diagram to show how the fish will be electronically connected.

7.2 Architecture

7.2.1 Electronic Architecture

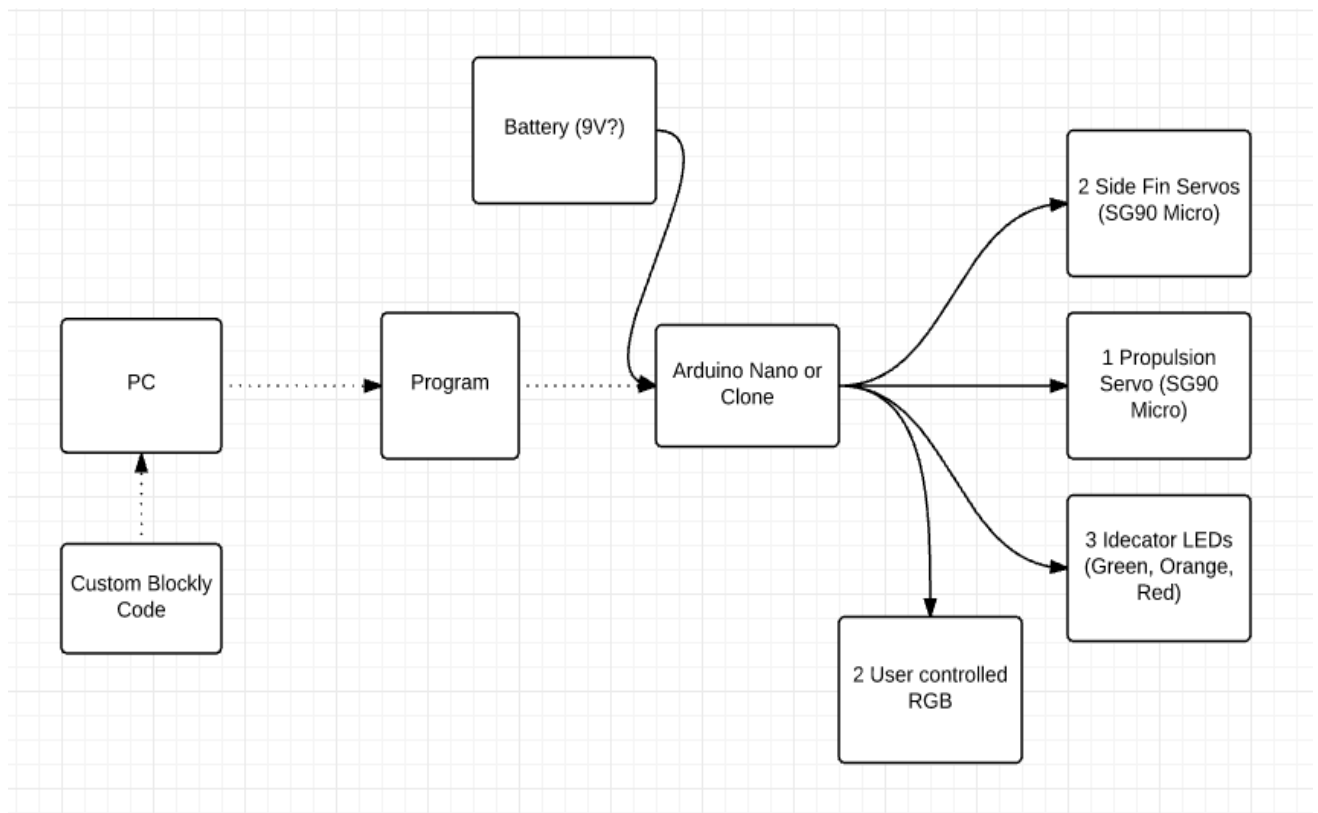


Figure7: Preliminary schematic

After researching available hardware and completing preliminary design consideration, this simple schematic outlining the projects hardware was compiled, shown in Figure 6

7.2.1.1 Complete Electronic Schematics

As shown in Figure 7, there is an Arduino Nano used to operate all components. The 14 digital I/O and one Analog Input of the Arduino are used to drive the servo motors, to power the LED and readout the button. To power the three servo motors, a voltage regulator 7805 is used. This regulator has a current capability of 1.5 A. Since every servo has a maximum working current of 500 mA [Microservo - 1.6Kg - botnroll.com](https://www.botnroll.com/microservo-1.6kg), the voltage transformer is able to power all of the servos. The digital Outputs D2-D4 of the

Arduino Nano are used to control the servos. The three single color LED and the two RGB LED are connected to the digital Outputs D5-D12.. To limit the current in the LED to a safe value, every LED is serial connected to a 330 Ω resistor. In addition, the button is also serial connect to an 330 Ω resistor to protect the analog Input A1. In case of a pressed button 5 V are directly connected to the analog Input. The resistor has to function to protect the Arduino board of this voltage.

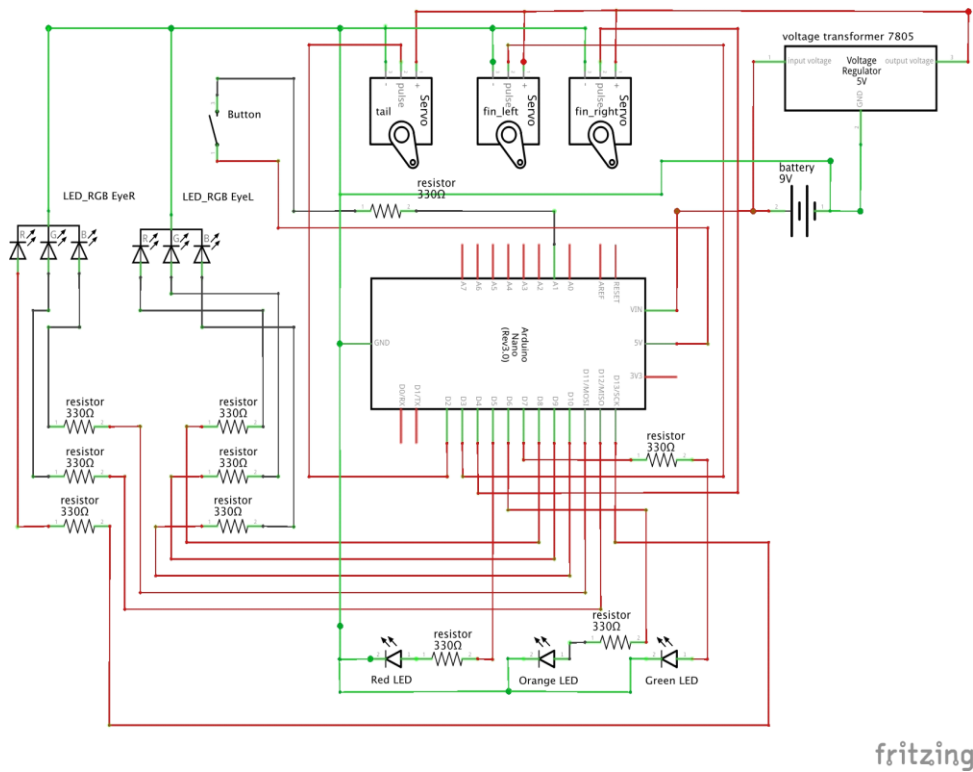


Figure8: The electronic schematics includes all components which are located inside the fish.

7.2.2 Modeling the Fish Body

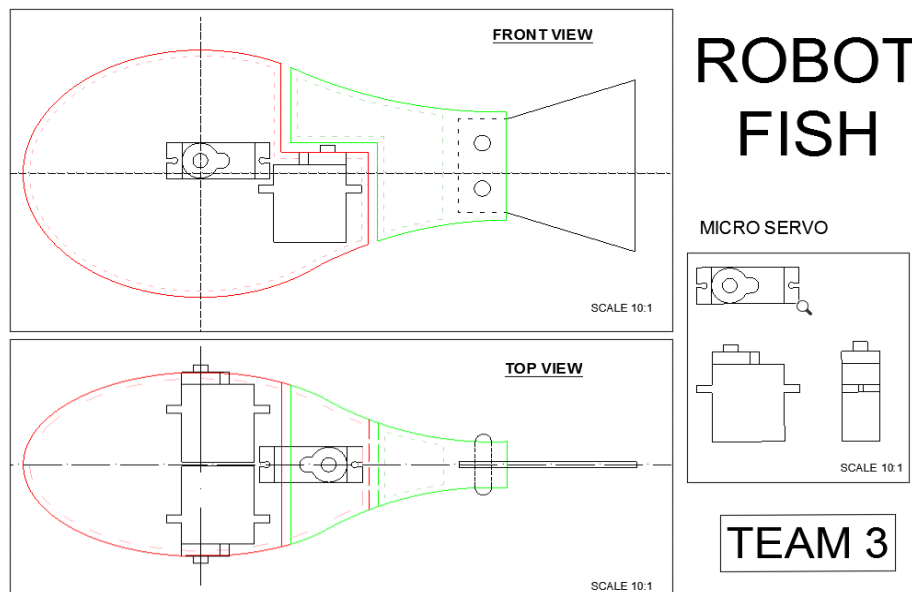


Figure9: Structural Drawings

The physical body of the fish has gone through many conceptual design changes. the realization of the design began with simple 2D sketches and evolved into increasingly complicated 3D models. This evolution and the thought process behind the design is outlined in this section. After completing several hand sketches, Team Three created their first CAD design which may be seen in figure Error: Reference source not found.

This 2D model above was created in AutoCAD and shows the original concept for Coduino. Tough the design has since undergone a number a critical changes, the essence of the design remains the same as shown in figure 3, with one servo driving propulsion and two servos controlling pectoral fins. The team thought it would be important to give the final product more than the required one degree of freedom. This would provide children with a greater range of elements to program, and more fun toy. Hence the inclusion of the models pectoral fins. As and additional bonus, these fins will provide Coduino with increased stability in the water.

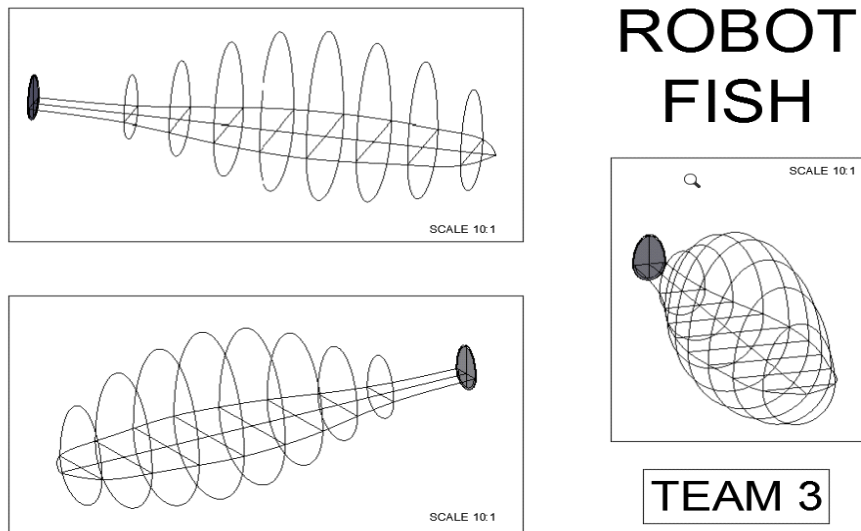


Figure10: Structural Drawings

After completing the first 2D design, a simple 3D structure was completed in order to conceptualize the shape of Coduino's body. This model is shown in figure Error: Reference source not found below.

The model in figure Error: Reference source not found was created in AutoCAD and shows the general shape that the final product will take.

7.2.2.1 Advanced 3D Modeling

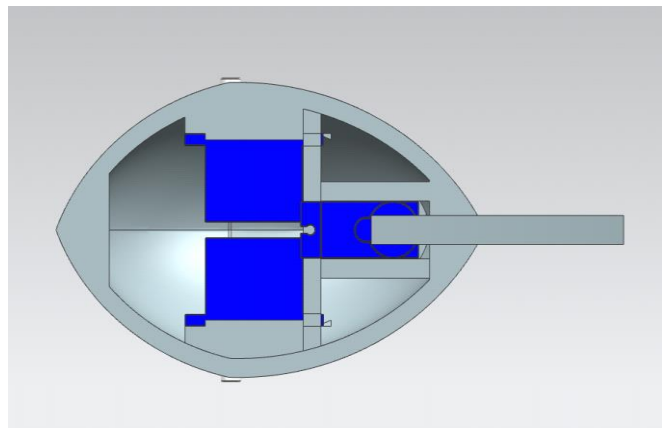
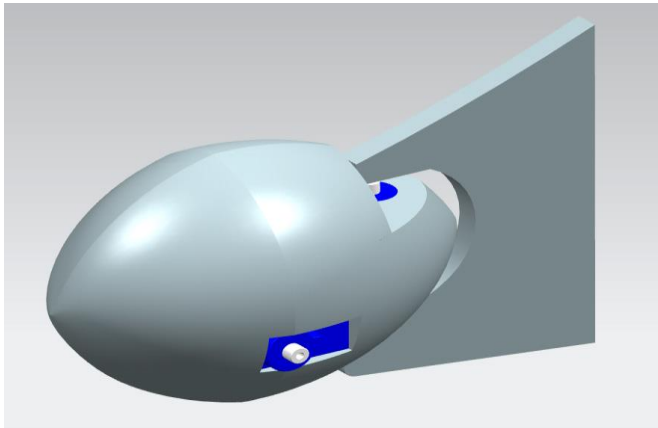


Figure 11: 1st Complete 3D CAD Model

The body of Coduino will be created with a 3D printer. These printers read STL files which are typically created in a 3D modeling environment. To create these 3D models, team three utilized Siemens NX10. Several design iterations were created in NX before producing the model shown in Figure 10.

After completing and analyzing the first model, team three decided on several important structural changes. First it was determined that a linkage should be created between the driving servo and the rear fin in order to reduce stress on the servo. It was also determined that the body of the fish should be re designed to allow sufficient room for batteries below all the servos and that additional support should be added to the fish's side walls. Finally, it was agreed that the fishes solid rear fin should be replaced with a two-part fin. The new rear fin should consist of a solid plastic piece attached to the servo and a semi-flexible rear portion that will provide the bulk of the propulsion. With these changes into a new design, the model shown in figure 11.

After completing and analyzing the first model, team three decided on several important structural changes. First it was determined that a linkage should be created between the driving servo and the rear fin in order to reduce stress on the servo. It was also determined that the body of the fish should be re designed to allow sufficient room for batteries bellow all the servos and that additional support should be added to the fish's side walls. Finally, it was agreed that the fishes solid rear fin should be replaced with a two-part fin. The new rear fin should consist of a solid plastic piece attached to the servo and a semi-flexible rear portion that will provide the bulk of the propulsion. With these changes into a new design, the model shown in figure 11.

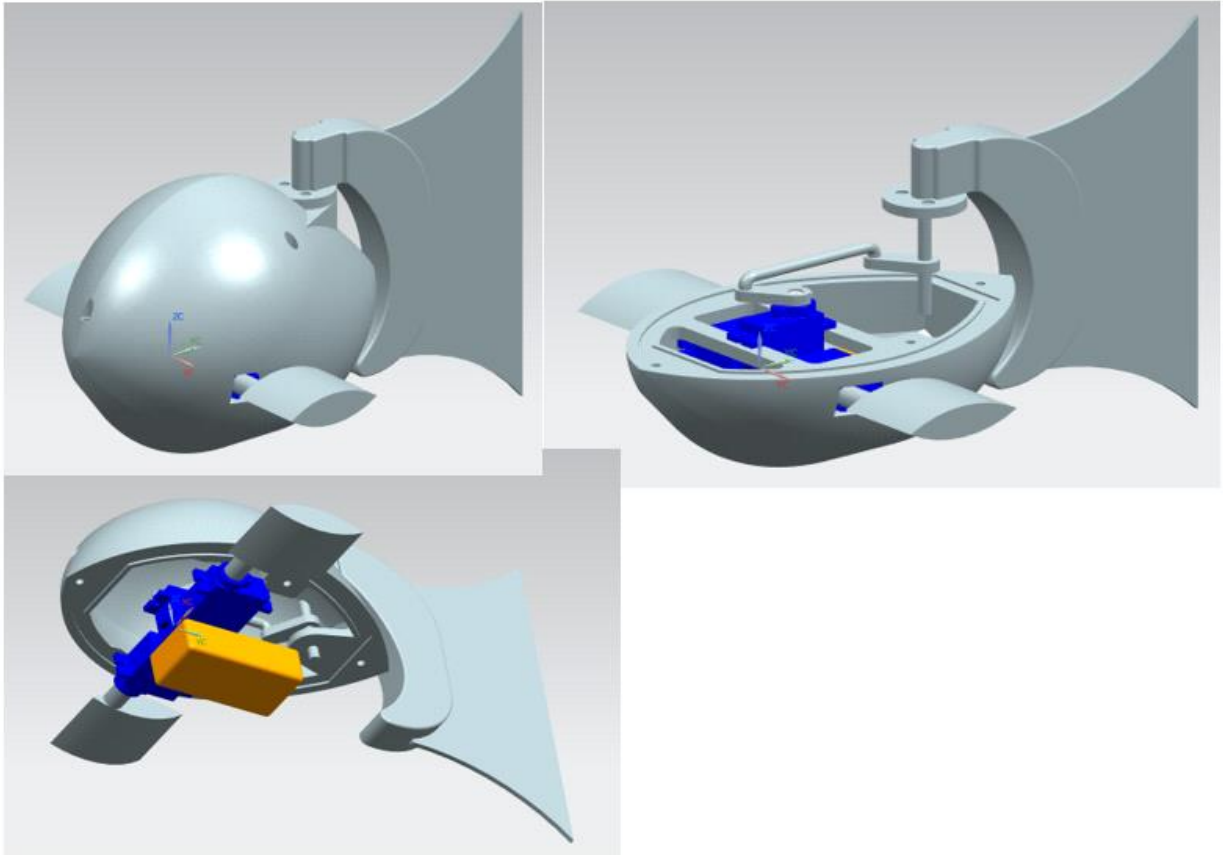


Figure12: 2nd Complete 3D CAD Model

The second complete 3D model incorporated the necessary design changes identified during previous design phases. As can be seen in figure Error: Reference source not found, the orange block, which represents the battery, is located at the lowest possible point. As the battery is the heaviest component, this drastically lowers the design's center of gravity, making it more stable in the water. The body's walls have been slightly thickened and supports added in order to increase structural integrity. In this model, the tail has been split into two distinct pieces and is driven via a linkage, rather than directly by the servo.

7.3 Components

Table15: Preliminary material list

Material	Usage	Amount	Price [€]	Web Link
Arduino nano board	board to control all sensors of the fish	1	12.90	botnroll
SG90 Micro Servo	one is used for the tail, two for the fins	3	5.95	botnroll
LED (red, yellow, green)	feedback	3	0.25	ptrobotics LED RED ptrobotics LED YELLOW ptrobotics LED GREEN
LED RGB	eyes	2	1.00	botnroll
9 V battery connector	connecting the 9 V battery	1	0.40	botnroll
330 Ω resistor	resistor for the LEDs	10	0.05	ptrobotics
button	a button to press	1	0.35	Mouser Electronics
Voltage Transformer 7805	transforms the 9 V of the battery to 5 V	1	0.80	ptrobotics

7.4 Functionalities

7.5 Tests and Results

7.6 Conclusion

Provide here the conclusions of this chapter and introduce the next chapter.

8 Conclusions

8.1 Discussion

Provide here what was achieved (related with the initial objectives) and what is missing (related with the initial objectives) of the project.

8.2 Future Development

Provide here your recommendations for future work.

Bibliography (1)

- [1] Tom Mitchell, jul 2000. *Karel The Robot.*
- [2] Ernst Bovenkamp, apr 2016. *RoboMind.*
- [3] Mitchel Resnick, apr 2016. *Scratch.*
- [4] Google Developer Groups, apr 2016. *Blockly.*
- [5] Edutec Research Group, apr 2016. *S4A.*
- [6] David Li, apr 2016. *ArduBlock.*
- [7] Microsoft, apr 2016. *Kodu.*
- [8] Wikipedia, apr 2016. *Lego Mindstorm.*
- [9] Allen Cypher, apr 2016. *Stagecast Creator.*
- [10] 3DPrintingforbeginners
- [11] Becky Stern, jul 2013. *Experimenting with NeverWet + Electronics.*
- [12], [13] Andrew Sink, apr 2014. *Building an Acetone Vapor Bath for Smoothing 3D-Printed Parts.*
- [14] Debra Thimmesch, aug 2015. *USING WAX TO GIVE YOUR 3D PRINTS A SMOOTH, WATERPROOF FINISH.*
- [15] Ben Friesen, sep 2014. *Waterproofing PLA 3D Prints.*

Bibliography (2)

[16] Seal & Design Inc.. Gland Dimensions Face Seal Glands.

[17] eur-lex

[18] study on the competitiveness of the toy industry

[19], [22] Joshua J. Yates, 2012. Abundance on Trial: The Cultural Significance of "Sustainability", month =.

[20], [24] Daly, Herman E., 1990. Toward some operational principles of sustainable development. *Ecological Economics*, 2, pp.1–6, ISSN 0921-8009.

[21] Alexander Osterberger, sep 2011. Batterien: Akkus sind nachhaltiger.

[23] definition of social sustainability. apr 2016.

[25] El-Zein, Abbas, 2013. As engineers, we must consider the ethical implications of our work | Abbas El-Zein. *The Guardian*, Guardian News and Media.

[26] Cleverism, Jan 2015. Social Responsibility & Ethics in Marketing. *Cleverism.*

[27] Cleveland, P M, Mar 2014. Academic Ethics and Integrity. *Pine Manor College.*

[28] Dunn, Stephen, Jul 2014. What are Environmental Ethics? - Conserve Energy Future. *ConserveEnergyFuture.*

[29] EU Com, Aug 2013. EEl Directives. - *European Commission.*

[30] Microservo - 1.6Kq - botnroll.com.